



Structural Steel Fabricators



**BUILDING  
STRUCTURAL  
EXCELLENCE**



# Award winning residential and commercial projects.



"Thank you all for the effort you put into the Avondale Trade Centre Project. This was an extremely tight programme which you all embraced with enthusiasm and a 'can do attitude' which is a fundamental element required in this industry"

**Brian Gibbes** - General Manager, Dominion Constructors



We supply, fabricate, and install steel for your commercial and residential projects - including refurbishments, seismic upgrades, new builds and multi-storey office buildings.

Our qualified staff fabricate steel at our Albany factory, and our crews of top certified welders install it efficiently on site. 3D computer modelling and precision laser cutting and drilling achieve a high standard of finish and a fast build. With exceptional customer service, brilliant tradespeople, and more than 30 years in the steel business, we treat every job like an award-winning project.

## Fabricating **quality structures**

Sharing huge steel construction knowledge at the design stages of your build and anticipating other trades' needs on site are just some of the ways we can reduce costs and add value to your project. With specialist technical knowledge and decades of industry experience, our insights can improve the constructability, efficiency and safety of your build.

It's all part of what we consider quality customer service.

We keep you informed and updated throughout the manufacturing and installation process, and we're reachable 24/7. We take the hassle out of steel work by providing a smooth interface between our work, your building co-ordinator and other end users. Accurately translating your drawings and specifications, asking crucial questions, inspecting the site ahead of installation, thinking ahead to the next step of the build - we make it exceptionally easy for you to count on us for quality.

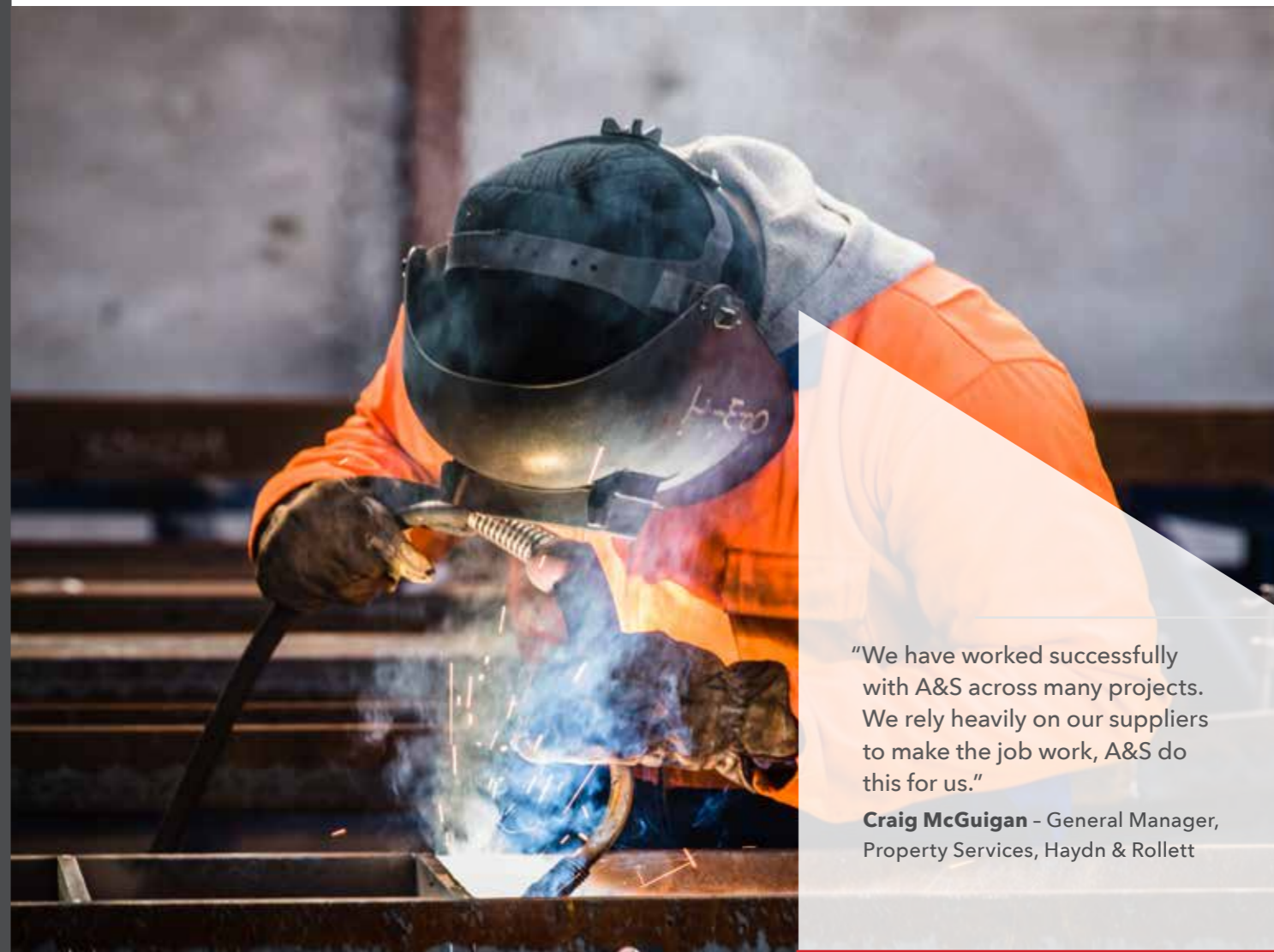
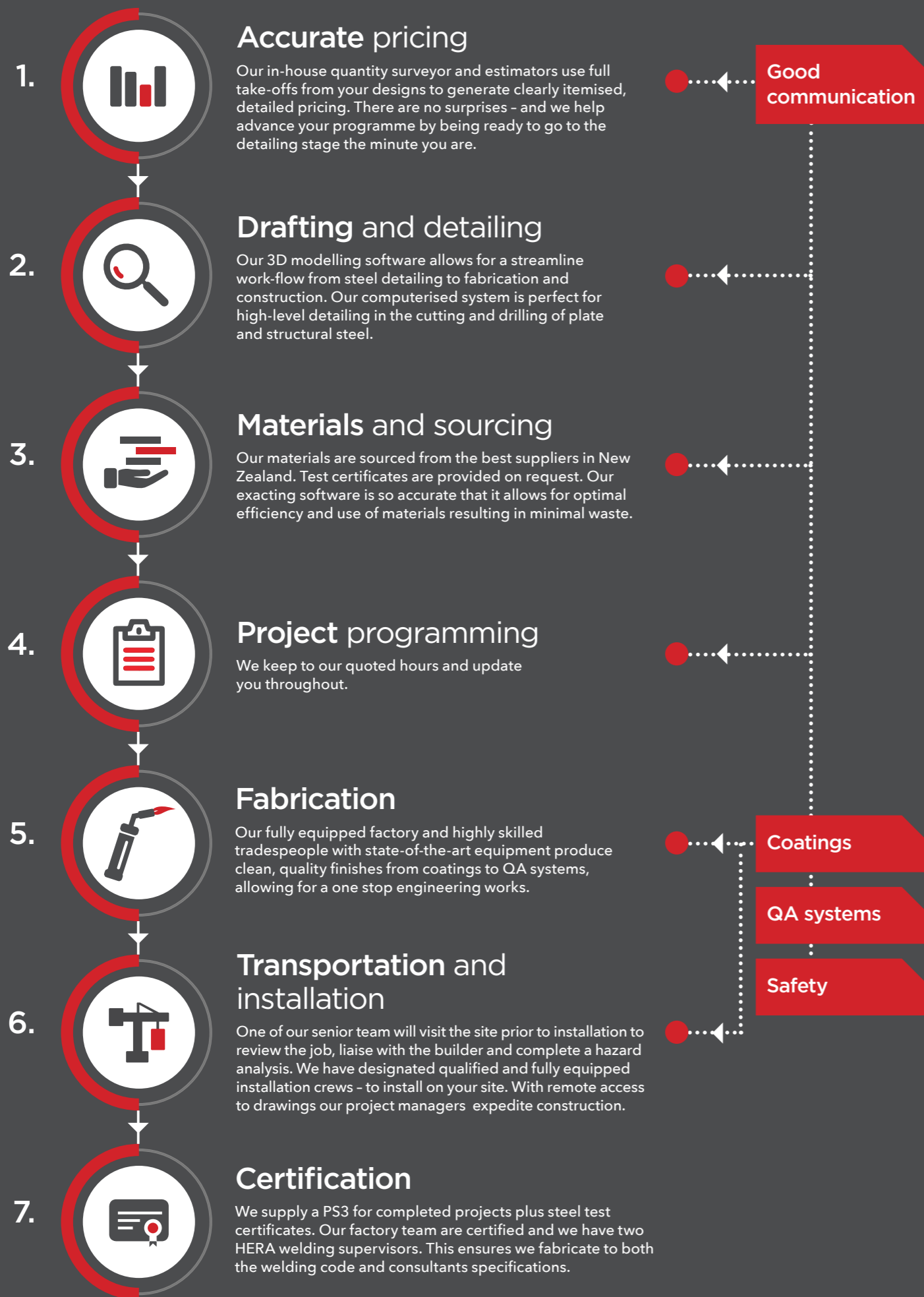
## A highly dedicated **team approach**

We've come a long way since 1984 when we operated from Director Sue Mill's garage. Her vision for a high-stud purpose-built Albany factory was realised in 1996 - in steel, of course.

Innovation, investment, and a can-do approach have always been part of the A & S Engineering ethos - and as Auckland has grown, so have we. By taking a team approach we apply specialised knowledge and workmanship to your job and keep it progressing smoothly.



 Our **7 stage process**



"We have worked successfully with A&S across many projects. We rely heavily on our suppliers to make the job work, A&S do this for us."

**Craig McGuigan** - General Manager, Property Services, Haydn & Rollett

Precision is what sets our work apart from others. That is what is going to make the difference to the quality and efficiency of your build. It's right through our seven-stage process - from pricing, draughting and detailing, to sourcing materials, fabrication, installation and certification. We constantly monitor our steel as the build develops, ensure things run seamlessly by communicating with you all the way, and provide you with quality assurance documentation on completion.



## A culture of **health & safety**

Health and safety is fundamental to the way we operate - and always has been. Director Sue Mill's qualifications and experience as a health practitioner helps us keep health and safety top of mind. We protect your people and our people by providing quality in-house and NZQA-approved Site Safe training to everyone in our team.

Daily morning stand-up meetings bring our whole team together to highlight and share perspectives on any health and safety issues related to upcoming work at the factory and on site. This is a comprehensive discussion to which everyone contributes and which ranges in topics from managing site-specific risks to issues with vehicles, machinery or equipment. We are a member of Site Safe and all of us - including office staff - have site safety passports.

## Respecting the **environment**

Our precision processes - from detailing to installation - reduce waste to landfill. We source steel from reputable local manufacturers and support your efforts to be more environmentally sustainable.

Precise detailed drawings make for accurate, efficient orders of materials, preventing waste from the start. Any surplus steel from our fabrication processes is collected from our site for recycling and there is a significant recycled content in various New Zealand-sourced steel products. Any packaging from fasteners and other supplies is either avoided or recycled.

The latest generation of fabrication equipment, tools and fleet vehicles support further energy efficiencies.



## Our team



**Sue Mill**  
Joint Managing Director



**Jim Marsh**  
Joint Managing Director



**Nagesh Nemani**  
Quantity Surveyor & Pricing Manager



**Praneel Chand**  
Factory & Production Manager



**Johan Pieterse**  
Installation Manager



**Willem Louw**  
Technical Manager



**Nigel Major**  
Draughting Manager

"We keep costs down for our clients by pre-fabricating as much as possible in our factory's controlled, process-driven environment. That means when we take the steel to site, we can be in and out with no messing about. Builders are amazed how quickly we do it."

**Sue Mill** - Joint Managing Director, A & S





4 Tait Place, Albany  
Auckland 0632  
09 415 7343

[sue@asengineering.co.nz](mailto:sue@asengineering.co.nz)  
[jim@asengineering.co.nz](mailto:jim@asengineering.co.nz)

[www.asengineering.co.nz](http://www.asengineering.co.nz)